

BANK STREET, EAST VIC PARK



Artist impression



SHIFT
ACCESSIBLE HOMES



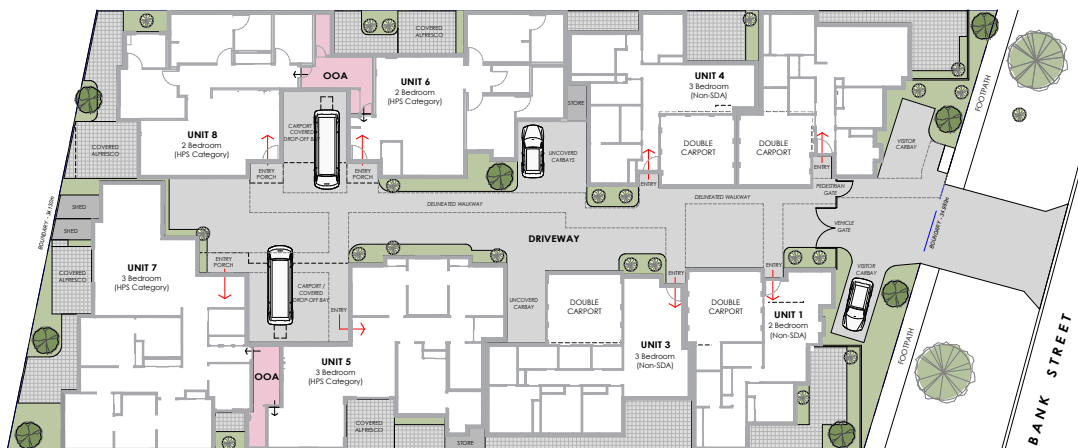
AVAILABLE OPTIONS

3 2 1 x 2

3 1 1 x 2

2 x 3 bedrooms, 2 x bathrooms 1 x parking
2 x 3 bedrooms, 1 ensuite, 1 x parking
Built to High Physical Support category

SCHEMATIC SITE PLAN



OPENING DOORS TO YOUR BEST LIFE

HOME FEATURES

STANDARD SDA FEATURES

- Safe, step-free accessways throughout
- Accessible car parking
- Air conditioning to living and bedroom areas
- Fire and acoustic separated bedrooms with fire sprinkler system throughout the home
- Spacious open plan living and accessible kitchen
- Continuous back-up power
- Provision for ceiling hoist in bedroom
- Provision for automated bedroom door
- On-site carer's room
- Automated keyless entry
- Smart lighting
- Accessible covered outdoor area and multiple landscaped garden areas

ADDITIONAL SHIFT HOMES FEATURES

- Automated blackout blinds
- Home security system linked to intercom
- Kitchen sink and cooktop on adjustable benchtop
- Separately controlled air conditioning to each bedroom with provision for automation
- Wide passages and doors sized above design standards (1050mm clear)
- Large bedrooms sized above design standards
- Private ensuite sized above design standards
- Accessible laundry with washing machine and dryer
- Large storage areas for personal items and equipment

SAFETY

All SHIFT Accessible Homes adhere to Class 3 Residential Care Building standards, ensuring rigorous compliance with safety regulations.

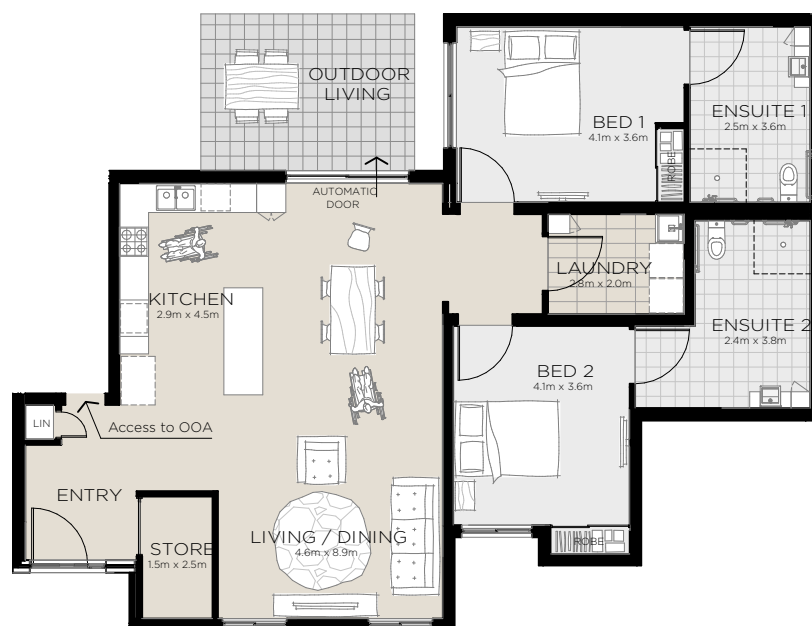
- Fire alarm and sprinkler system
- Direct connection of alarm to Fire Brigade for immediate response
- Continuous power backup for operation of doors and safety equipment

ADDITIONAL SAFETY FEATURES

In addition to the mandatory safety measures, SHIFT Accessible Homes are equipped with supplementary features to enhance security and comfort:

- Intercom entry system linked to a monitor in the house CCTV security to external areas
- Automated keyless front and rear doors for secure entry
- Fully integrated home automation system for convenient operation of lighting, window blinds, and other features

FLOOR PLAN (UNIT 6)



SHIFT
ACCESSIBLE HOMES

A Rocky Bay company



Rocky Bay
HEALTH + COMMUNITY



SDA Provider Number
4050074073

(08) 6399 4100

shifthomes.org.au